

IN BLOOM

A PUBLICATION FROM WATERFRONT BOTANICAL GARDENS

SPRING 2023



WATERFRONT
BOTANICAL
GARDENS



A LETTER FROM OUR PRESIDENT

Connections

E. O. Wilson, author of the book *Biophilia*, suggests that **human beings subconsciously seek connections with the rest of life.** A garden provides us the opportunity to connect with nature. Why is this connection so important? Wilson said that we love nature because our species learned to love the things that helped us survive.

Beyond the garden, human connection is also very important. I heard it stated that once you have a garden, you have a community. Our community includes thousands of plants and trees, hundreds of insects, mammals (some welcome, and some not!), and reptiles. But the human connection is very important to our garden. **Humans are pollinators too, helping to grow both plants and ideas.**

When I began working on this project 10 years ago, my first step was to start making connections. Being a Louisville native with a long career in the community, I was fortunate to have many! At that time, the organization was called Botanica. I nurtured my past relationships and friendships, all while cultivating new ones, to help spread the word about the garden project. As time went on, some of these connections became very important to the growth and development of today's Waterfront Botanical Gardens. Friends became donors and volunteers, and they attended our programs and fundraisers. Business connections led talented employees to our organization, and community members to our board of directors. Board members connected us with contractors, business relationships, and even more donors.

A board member made one of the most pivotal connections by introducing me to a Japanese architect and project manager living in New Albany, who was also involved with bringing Toyota to Kentucky in the 1980s. After meeting this person and asking if they were interested in helping us build a Japanese Garden, he connected us with Shiro Nakane of Kyoto. Without that connection, our world-class Japanese Garden would not be underway. And, in the future, it will be known world-wide because of the significance of Shiro Nakane and his career.

Come to the gardens. Be a pollinator, or learn about them. Listen to music, learn about orchids, volunteer, or just sit and connect with the humans, plants, and butterflies around you. **As a connector, you are always welcome.**

I'll see you there!

Kasey Maier,
President & CEO



Morikami Japanese Gardens -
Delray Beach, FL

OUR VISION

Planting seeds and growing minds
for more sustainable cities.

STAFF

Kasey Maier
President & CEO

Davena Vowels
Chief Operating
Officer

Megan Bibelhauser
Director of Marketing
& Communications

Jeff Fortwengler
Director of Finance

Andrew Hagerty
Director of
Horticulture

Hakeem Nuru
Director of
Human Resources

Lori Kay Scott
Director of
Development

Daniel Cash
Facilities Coordinator

Duncan Cherry
Marketing &
Media Manager

Drew Combs
Arboriculture
Specialist

Amy Defigueiredo
Accounting Manager

Rosie Devine
Administrative
Manager

Hunter Dixon
Development
Operations Manager

Chelsea Hicks
Horticulture
Specialist - Avish

Logan Lewis
Property Maintenance
Manager

Fallon Llewellyn
Special Events
Coordinator

Jen O'Connell
Special Events
Manager

Emily O'Dell
Development
Specialist

Wanda Peck
Youth Education
Manager

Kat Rivers
Adult Education
Specialist

Molly Young
Memberships &
Volunteer Manager

Mary Miller
Contract Grant Writer

OFFICERS OF THE BOARD

Margaret Bell
Chair
Retired, Former
Managing Director,
Fort Washington
Investment Advisors

WELCOME NEW STAFF



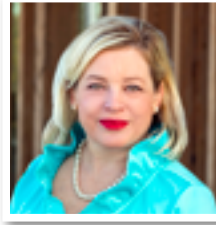
Megan Bibelhauser
Director of Marketing
and Communications



Jeff Fortwengler
Director of Finance



Hakeem Nuru
Director of Human
Resources



Lori Kay Scott
Director of Development



Rosie Devine
Administrative Manager



Logan Lewis
Property Maintenance
Manager

WELCOME NEW BOARD MEMBERS

Waterfront Botanical Gardens is honored to welcome six new board members in 2023. The Board of Directors is instrumental in the growth of the organization and the successful implementation of our Master Plan.



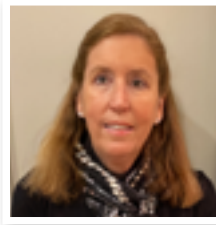
David Carpenter
President/CEO, Japan/
America Society
of Kentucky



David Graeser
Retired, President, Bohnert
Equipment Co., Inc.



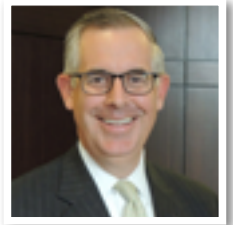
Ben Ruley
Vice President of Financial
Planning Analysis,
Tri-Arrows Aluminum



Frances Scholtz
Community Leader
& Volunteer



Ben Simmons
Associate & Client Liaison,
Schmidt Associates



Clay Stinnett
CFO, EVP, Stock Yards
Bank & Trust

COVER FLORA

Front: Waterlily *Nymphaea 'Ultra Violet'*
Back: Black-eyed Susans *Rudbeckia hirta*

Nancy Davis
Vice Chair
Retired, Former
CFO Stock Yards
Bank & Trust

David Grey
Secretary
United Healthcare

Susan Howard
Treasurer
Assistant Director
of Tax Services,
Dean Dorton Allen
Ford, PLLC

BOARD OF DIRECTORS

Greg Braun
Owner & Founder,
Maid in Louisville

Gordon Brown
President & CEO, Home
of the Innocents

Greg Buccola
Managing Principal, KPFF
Consulting Engineers

David Carpenter
President/CEO, Japan/
America Society of
Kentucky

Karen Dahlem
President, Dahlem
Consulting

Kevin Fennell
Architect, Calhoun
Construction

Matthew Boone Gardiner
Owner & President,
Boone Gardiner
Landscape
and Farm

David Graeser
Retired, President,
Bohnert Equipment
Co., Inc.

Will Greene
Owner, Vanguard
Cleaning Systems
of Louisville

Kathy Oyler
Community Leader
and Volunteer

Merry-Kay Poe
President, Unbridled
Films LLC

Ben Ruley
Vice President of
Financial Planning
Analysis, Tri-Arrows
Aluminum

Jon Salomon
Partner,
Dentons Bingham
Greenebaum LLP

Chase Sanders
Senior Investor Relations
Analyst, Brown-Forman

Frances M. Scholtz
Community Leader
and Volunteer

Ben Simmons
Associate & Client Liaison,
Schmidt Associates

Clay Stinnett
CFO, EVP, Stock
Yards Bank & Trust

**Gerry-Lynn
Wichmann, MD**
Medical Director
of Substance Use,
Louisville Veterans
Affairs Medical Center

**Robert McDowell
(Mac) Willett**
Owner, R. M. Willett
Properties and Willett
Lumber Co.

The Helen Harrigan Legacy Society



Lori Kay Scott
Director of Development

*If you plant a seed, you can touch the future.
If you stop and listen, you can hear the past.*

The Waterfront Botanical Gardens seeks to inspire meaningful connections among people, plants, and nature through horticulture, education, and community engagement. Thanks to the vision of Helen Harrigan to “build a botanical garden and conservatory” for Louisville, her estate provided the means to do just that in 2001. **The Helen Harrigan Legacy Society recognizes those who demonstrate the highest level of enduring support to the Waterfront Botanical Gardens by making a gift in their will or trust, as a beneficiary of their retirement account, or through another type of planned gift.** Since Helen’s bequest, many members of our community have connected with that same vision and have pledged lasting gifts to the Gardens.



All donors who include the Waterfront Botanical Gardens in their estate plans or make a planned gift are eligible to become members of the Helen Harrigan Legacy Society. Members receive an invitation to an annual cocktail party, recognition in the Annual Report, and complimentary private tours of the Garden. The Society is our way of saying “thank you” for including the Gardens in your plans.

Just as a perennial flower adds perpetual beauty to a garden by returning and multiplying each year, a planned gift will support the Gardens for future generations to enjoy.



For more information, or if you have already included us in your estate plans, please contact Lori Kay Scott, Director of Development at **502-608-3580** or **lkscott@waterfrontgardens.org**

Inspiring Support

The Cherry Blossom Society



Margaret Bell
Chairperson of the Board

The Cherry Blossom Society is a very special group of people that have committed to an annual gift of \$10,000 or more toward the Japanese Garden.

Members of this esteemed Society enjoy a customized experience, special access to the Gardens, and other exclusive benefits.

As Waterfront Botanical Gardens embarks upon the building of the Japanese Garden, stewarding our current supporters and encouraging others to join the project is incredibly important. Just as with our Cherry Blossom Society members, **we hope our efforts to engage and educate with**

exciting news, events, and programs will inspire support at every level.

As part of a 2023 Cherry Blossom Society membership, members receive special benefits, including a family membership, early access, behind the scenes tours, access to the Japanese Garden designer, and exclusive events.

The completion of the Japanese Garden will bring with it a significant increase in visitors, which will be a wonderful complement to local and regional tourism. We are grateful for our position as an urban garden with proximity to

many Kentucky cultural experiences. **We look forward to making an important contribution to the quality of life for our residents, and most importantly our families and future generations.** As both the Board Chair and a member of the Cherry Blossom Society, I invite you to become a part of the Cherry Blossom Society. **As the year unfolds and you wish to visit and support a place offering beauty, entertainment, education, and reflection, please come see the Gardens.** Thank you for helping us continue to grow.



Join the Crane Community

In Japanese folklore, it is said that if you fold 1,000 origami cranes (千羽鶴, *senbazuru*) your wish will come true.

The 1,000 Cranes Campaign will help fulfill our community's wish of building a world-class Japanese Garden.

Be a part of The Crane Community by committing to a \$1,000 annual donation. Donors at this level will be invited to The Crane Community Celebration this fall, where you can fold an origami crane to be included in a special work of art. **All gifts of \$1,000 or more received by August 1, 2023 will be matched dollar-for-dollar!**



THE CRANE
COMMUNITY



For more information,
email development@waterfrontgardens.org
or call (502) 276-5404



Donate online at waterfrontgardens.org/crane
Mail checks payable to Waterfront Botanical Gardens to
PO Box 5056 | Louisville, KY 40255



Andrew Hagerty
Director of Horticulture

It Takes a Community

Spring returns with a rush of new activity filling the air in the garden; it celebrates the oncoming season of growth with all the possibilities and anticipation of what is yet to come. It is easy to get caught up in the excitement of spring as buds swell in the sun's rays and flowers emerge from the ground. Amongst the thrill of welcoming the Gardens' fourth growing season, **inspiration comes not merely by how much we have grown, but by those who have made it possible.**

Waterfront Botanical Gardens is here because of the people who believed in the value of creating Louisville's first urban botanical garden. The first building was the Graeser Family Education Center,

which was made possible by a family motivated by their love of plants and community. It took swarms of volunteers to transform a lone building on top of an abandoned landfill into the verdant gardens that exist here today. This hive of community support began the process of **restoring the land into a thriving ecosystem able to provide for a diverse array of life.**

Restoration of the land depends on more than a landscape management plan being put into practice. It relies upon the continual support of people who believe in the Gardens' mission. **The last three and a half years have deepened the relationships necessary for creating a place for both people and**



Diversity

Waterfront Botanical Gardens is proud to serve as an educational resource for our community, while also providing a space for unique plants and animals to survive. Plants are selected by WBG's horticulture team to create a diverse ecosystem that offers habitat to a variety of pollinators and other wildlife, as well as **to showcase the wonderful variety of species that can grow in our region.** We aim to have blooming plants continuously throughout the

year for our pollinators. For example: redbud blossoms in the spring, coneflowers during the summer months, and bright purple asters in the fall.

It is also important to consider that insects and other fauna have specific needs for where they reside, whether it's among small leafy plants, tall trees, low ground coverings, or shrubs. A robust mixture of vegetation helps **restore the**

plants to prosper. Though the Gardens staff is tasked with ensuring our plants flourish, it is our network of support that allows us to do so. The Gardens are linked to a web of individuals who give their time and talents, and like any successful ecosystem, the network of connections which sustain us are as diverse as they are essential.

Essential connections come from all directions: our donors who believe in the benefits a botanical garden brings; our fellow green industry professionals who share their wealth of knowledge and experience; the student interns who spend their summers alongside us learning and maintaining the grounds; our volunteers who continuously show up to dedicate

their time to our growth; the teachers and parents who bring the next generations to the Gardens to learn and nurture their relationship with nature. Through all of this, we are reminded why our efforts are worth it, as we see more and more visitors come and experience all we have grown together.

So, this season, Waterfront Botanical Gardens rejoices with spring. While there are still many acres of gardens yet to be developed, we have come a long way. **We not only celebrate how the Gardens continue to grow and provide more opportunities for people to connect with nature, but we also treasure our community that made it possible.**



Chelsea Hicks
Horticulture Specialist - Avish

Promotes Diversity

environment for animals who have found the Gardens to be a refuge. At the Gardens, our native coral honeysuckle vine provides nectar and a nesting place for the ruby-throated hummingbird, goldenrod pollen is foraged by the native bee population in the fall to get them through the winter, black swallowtail butterflies rely on parsley as a host plant for food and to lay their larvae, and eastern red cedar provides shelter year-round for nesting

birds. In addition to many ecological benefits, **the plant biodiversity of the Gardens aims to capture the attention of all visitors' interests.** The plants WBG displays and cares for exemplify what can be grown at home and in our neighborhoods, providing a connection from our Gardens to yours. Our contributions as a community to increase the diversity of plants, insects, and wildlife will have a lasting impact on our ecosystem.



Drew Combs
Arboriculture Specialist

INVESTING IN SOIL HEALTH

Temperatures rise, the soil is stirred. Spring brings an awakening of our local ecosystem as well as new tools and techniques for the Horticulture team at WBG. In particular, an instrument called a **Supersonic Air Knife**.

Powered by an industrial strength compressor, **the Air Knife is a highly prized tool for managing soil and tree root health.** Using a powerful jet of air traveling at supersonic speeds, the air knife blasts through compacted soils, increasing soil volume, variation in soil

pore space, and nutrient availability. After the soil is aerated, nutrient-rich compost is incorporated, ensuring plants are provided with all the elements they need.

These steps are key to increasing the biodiversity of microbial life and enhancing the soil ecosystem, ultimately providing a more welcoming environment for the vast array of organisms living within it. The presence of springtails, pill bugs, and centipedes indicate healthy soils



Tri-Arrows Aluminum **Commits \$1 Million** *to the Japanese Garden*

Heavy equipment is on site and dirt is moving! **On September 29, 2022, we officially broke ground on Louisville’s first public, authentic Japanese Garden** designed by renowned landscape designer, Mr. Shiro Nakane. Since the groundbreaking, we have watched the landscape change with anticipation and excitement. Waterfront Botanical Gardens’ \$22 million world-class Japanese Garden will sit on a two-acre site just north of the existing Graeser Family Education Center. Our master plan architects and Mr. Nakane are working closely alongside WBG staff to turn this vision into a reality.

We were joined at the groundbreaking by a host of local elected officials, over 100 WBG supporters, board members, staff, and donors, as well as Mr. Nakane and the

Deputy Consul General of Japan, Masahiko Mitsumoto. While in the presence of so many supporters, we were thrilled to announce a **\$1 million commitment to the Japanese Garden by Tri-Arrows Aluminum, a Japanese-owned company.**

Governor Andy Beshear thanked Tri-Arrows Aluminum for their generous commitment to the Japanese Garden: ***“This garden is going to be a unique, world-class destination that will attract visitors and enhance the already-rich cultural life of Louisville and Kentucky as a whole.”*** The support of Team Kentucky partners like Tri-Arrows Aluminum is what makes ambitious projects like this possible and provides one more inspiring example of people coming together to build a better Kentucky.”



teeming with life. The observed growth of our worm population signifies a bright future for the plants and for the hungry birds above. Without healthy soils, our plants can't thrive. **Without a thriving garden, our community lacks an essential environmental resource.** Reuse of a reclaimed trash dump is a complex task, and it will take extra "TLC" and innovative ideas to ensure we continue to grow a healthy garden. The Air Knife is one of many moving parts that are essential for turning our city's

prior dumping grounds into a world class botanical destination. **Our task is clear: to provide an educational, inspirational, and ecologically sustainable resource to our region.** Just as we innovate ways to invest in our communities, we must continue to seek new ways to invest in the growth and health of WBG. I hope you will pay us a visit and see just how much our community's investment is paying off.



Scan here to see the **Supersonic Air Knife** at work and learn more from **Drew Combs**



During the event, Mr. Nakane took to the podium to reflect upon the bridging of cultures that takes place when a Japanese Garden is constructed outside of Japan. He said, ***"The apparent admiration and esteem enjoyed by the Japanese garden throughout the world is presumably attributable to the recognition of its universal artistic merits, which transcend all racial, religious, and cultural differences."*** For Mr. Nakane, significant projects like this are a part of his heritage. He is the son of renowned traditional Japanese landscape designer, Kinsaku Nakane, and he has followed in his father's footsteps since becoming president of Nakane Garden Research and Landscape Consultant firm in Tokyo.

The Japanese Garden is expected to be completed over the next 24 months with craftsmen from Japan meticulously constructing many unique elements. The Waterfront Botanical Gardens team is honored and thankful to have such tremendous skill and talent devoted to this project.



We anxiously await the day we can welcome the community to our world-class Japanese Garden, and we thank you for your support as we grow!



CREATING CONNECTIONS WITH LIFELONG LEARNERS

Kat Rivers
Adult Education Specialist

It's spring and the love for learning is in the air!

We take a break from our Adult Education programming during December and January. While this is valuable time to prepare for the coming year, **we always look forward to reigniting our connections and relationships in the spring.** As our programs grow and repeat each season, many of our students are getting to know each other, too. Just the other day, we welcomed students back to our first yoga session since November 2022. Past attendees came out of their winter hibernation and greeted each other with open arms. The connection was felt as we welcomed this beautiful moment shared among new friends.

It was bubbly, fun, and full of excitement for the potential of future connections in 2023!

Recently, we hosted a Pollinator Gardening program and half the class was a group of spirited first time gardeners. Their lively conversation and strong desire to plant natives in their yard really propelled the class to be better than we even imagined! Unbeknownst to them, **our students are cultivating their own special ecosystem of interests, personalities, backgrounds, and aspirations.**

Together, this vibrant display of individuals makes us excited to come to work every single day.

With the tremendous growth of our lifelong learning audience, we want to give our abundant thanks to you, our students, for being so passionate about Waterfront Botanical Gardens and the natural world around us. I finish up this "thank you" with a small, but impactful quote from a favorite book of mine:

"Knowledge generates interest, and interest generates compassion."

Douglas W. Tallamy, *Nature's Best Hope: A New Approach to Conservation that Starts in Your Yard*

To learn more about our Adult Education program, visit the learn tab at waterfrontgardens.org



Cheers to lifelong learners!



Molly Young
Memberships and Volunteer Manager

MEMBERSHIP: A SHARED COMMITMENT

WBG members are essential to the intricate network that makes up the Gardens. Our members support the Gardens for a variety of reasons. Some come to us to further their education about the relationship between plant life and a healthy environment. Some people come to the Gardens for much needed reflection and respite from this chaotic world we find ourselves living in. Some come to the Gardens to connect and socialize with friends and family during one of our events. **Regardless of their motivation, our members are unified by a shared commitment to, and passion for, this very special project.**

As our membership program continues to grow and evolve, our members are steadfast in supporting our endeavors. With the introduction of last year's **Laugh & Learn** program, members were given exclusive access to fun and educational

programming tailored to their needs. This year we will introduce a similar experience aimed towards our member families: **Laugh & Learn... Family Style.** Whether it's a class or program, a cocktail at sunset, or a hot cup of coffee and stroll through the Gardens as they wake up for the day, our members often come together in the Gardens to reconnect with each other.

Our members' enthusiasm for our mission and their adoration for the beautiful landscape we have built thus far is contagious and vital to our ongoing success.



CULTIVATING WONDER, UNITING YOUTH



Wanda Peck
Youth Education Manager



“Unless someone like you cares a whole awful lot, nothing is going to get better. It’s not.”

Oh, the timeless wisdom of Dr. Seuss’ *The Lorax*. It’s funny how a sentiment written in a children’s book over 50 years ago still manages to motivate me in my work today. It’s what drives me forward: **the desire to connect kids to nature so that they, in turn, develop compassion for their environment.** I want students to leave the Ellen T. Leslie Botanical Classrooms with a thoughtful sense of empathy for the other living organisms that share our world. Once they start to care, the likelihood that they will become lifelong stewards for the earth, instead of apathetic grownups, increases.

Luckily for me, this task of inspiring junior eco-friendly advocates comes easily through the simple act of taking kids into the Gardens. **Gardening captivates children’s innate sense of wonder by offering up learning opportunities that feel like play.** It activates all five senses: feeling textures, smelling scents, seeing the rainbow of colors, hearing the sounds of nature around them, and tasting the veggies they have grown. Kids love to get dirty and watch things grow. As they see their efforts produce results, gardening gives them a sense of purpose and responsibility that they may have not had before. There are countless studies that have proven that spending time gardening is relaxing and good for the soul.

Through classes and family programs at Waterfront Botanical Gardens, **we are connecting young citizens to the world of plants, persuading them to care deeply for their environment, and empowering them to make positive decisions for the health of our planet.**



VOLUNTEERS: GIVING FREELY TO GROW ENGAGEMENT

A garden is a place of great connectivity. A place where **every living thing is connected to create a beautiful habitat of life that ebbs and flows harmoniously with the changing seasons.** Every plant in our garden has been carefully curated and cared for by the hands of our horticulture team and dedicated volunteers. They work together to ensure our ecosystem thrives so that every living thing that visits the gardens, whether a bumble bee or a child experiencing a garden for the first time, finds a meaningful and vital connection.

WBG volunteers are an intricately woven web that spreads throughout the Gardens and supports every single aspect of our mission and vision. Our Garden Guides are connecting with visitors to ensure that their experience while in the Gardens is memorable. Our horticulture volunteers work to maintain the health and beauty of our plants so that the Gardens look magnificent throughout the year. Our adult

and youth education volunteers help us grow the minds of students of all ages by delivering quality programming to our community. Our community outreach volunteers encourage engagement with the Gardens to the community at large.

Our volunteers support the work we do on every level. The meaningful relationships they continue to build with staff and with one another has cultivated **a beautiful bond that is reflective of our bountiful garden.**



Learn more about volunteer opportunities at our website: waterfrontgardens.org/volunteer



Jen O'Connell
Special Events Manager

STEWARDED THE ENVIRONMENT ONE EVENT AT A TIME

Many moons ago, I was that party planner who had to have the balloons matching the plate, napkin, tablecloth, and all other party décor. Today, as our team designs, prepares, and executes special events atop the former landfill that is now Waterfront Botanical Gardens, I am much more conscious of what is hauled to the trash and recycling bins after each gathering. From corporate events, celebrations of life, weddings, and showers we have adopted a much more integrated approach. Now, we are trying to course-correct for Mother Earth one event at a time.

Our team makes intentional, respectful decisions when it comes to design, décor, party favors, wedding send-offs, and all other accoutrements. We are pushed to think outside the box and consider all the individual moving parts that together create a specific and memorable experience. Thankfully, we are able to collaborate with like-minded companies to cultivate a sustainability mindset. From palm leaf and bamboo plates that decompose in a matter of months, to digital invitations, to specialty seed paper that can be planted by its recipient, we are considering special opportunities to steward the environment - both indoors and out. Some of our event favors even include jars of locally-sourced honey, baby plants, seed packets, and more.



Gardens Aglitter

In 2022 we welcomed 8,289 visitors to Gardens Aglitter! Thank you to title sponsor Stock Yards Bank & Trust, as well as Republic Bank and Wagner Electric.



INTERN IMPACT

Waterfront Botanical Gardens is proud to partner with over a dozen local catering companies that have agreed to join us in our sustainability efforts. We are all learning together which items are recyclable, from food and beverage containers, to the plastic wrap around clean linens. With each event we are striving to do better and educate our community to become more connected to their environment, making personal and conscious choices for their future and their kids' future, one decision and one event at a time.



“Waterfront Botanical Gardens had an impact on me personally by creating a new passion for gardening and collecting house plants. The internship has tremendously affected me professionally. I have noticed my passion for plants having a larger impact on my designs in comparison to my other classmates. Instead of viewing plants as an afterthought in my design process, I take them into consideration from the beginning and use them as tools for designing a space. I love going into detail about how the layouts of the plants and their varying scents, colors, forms, and textures enhance a design.”

**Photo: Katie Davis, 2022 Horticulture Intern
University of Kentucky Landscape Architecture Major
Expected Graduation May 2023**



Thanks for the
experience!



😊
Thank you so much
for the opportunity
to celebrate
Christmas with
beautiful lights
and joy!
♡

Gardens Aglimmer Gives Back

Last year we gifted over 500 tickets to community organizations, allowing even more of our neighbors the opportunity to experience “Louisville’s Loveliest Holiday Tradition.” Our friends at the Family Scholar House shared many kind words about their visit to Gardens Aglimmer!

EVENTS



Music in the Gardens - Unusual Heat



Slaughter Elementary Field Trip



Japanese Gala



Friday Night Speaker - Dr. Aly Baumgartner



Laugh and Learn Series



Japanese Garden Designer Shiro Nakane and his son, Yukihiro



Volunteer Appreciation Event



Japanese Garden Groundbreaking



Western High School Cooking Class



Learn more about events on our website: waterfrontgardens.org/events

WATERFRONT BOTANICAL GARDENS

MUSIC IN THE GARDENS

PURCHASE TICKETS AT
WATERFRONTGARDENS.ORG/MITG

INCLUDES CHARCUTERIE BY CULTURED CHEESE
AND CHARCUTERIE BAR

GATES OPEN 6PM / CONCERT 7-8PM
TICKETS \$50 MEMBERS / \$60 NON-MEMBERS

FEATURING:

YAPA

WEDNESDAY, MAY 10

KIANA & THE SUN KINGS

WEDNESDAY, JUNE 7

THE JESSE LEES

WEDNESDAY, JULY 12

RUN KATIE RUN

THURSDAY, AUGUST 10

JUSTIN PAUL LEWIS

WEDNESDAY, SEPTEMBER 13

**BOURBON & BRASS
COMPANY**

WEDNESDAY, OCTOBER 11

TICKETS:



SPONSORED BY:

Beam SUNTORY

CULTURED CHEESE & CHARCUTERIE BAR

ACCREDITED WEALTH MANAGEMENT

PATRICK E. BALLARD

REPUBLIC BANK

WATERFRONT
BOTANICAL
GARDENS




1435 Frankfort Ave, Louisville, KY 40206

WATERFRONT
BOTANICAL
GARDENS



P.O. BOX 5056
LOUISVILLE, KY 40255-0056

NON-PROFIT ORG
U.S. POSTAGE
PAID
LOUISVILLE KY
PERMIT #879

A close-up photograph of a field of yellow Black-eyed Susans flowers. The flowers have bright yellow petals and dark brown centers. The background is a soft, out-of-focus green, suggesting a lush garden or field. The lighting is natural, highlighting the texture of the petals and the vibrant colors of the flowers.

“The soil is the great
connector of our lives, the
source and destination of all.”

Wendell Berry